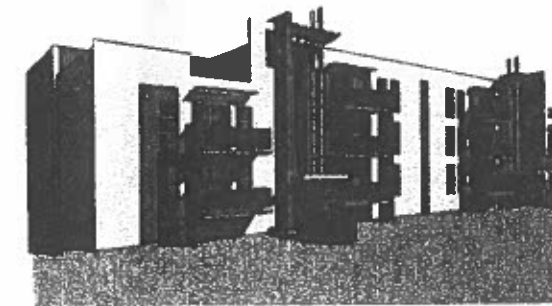
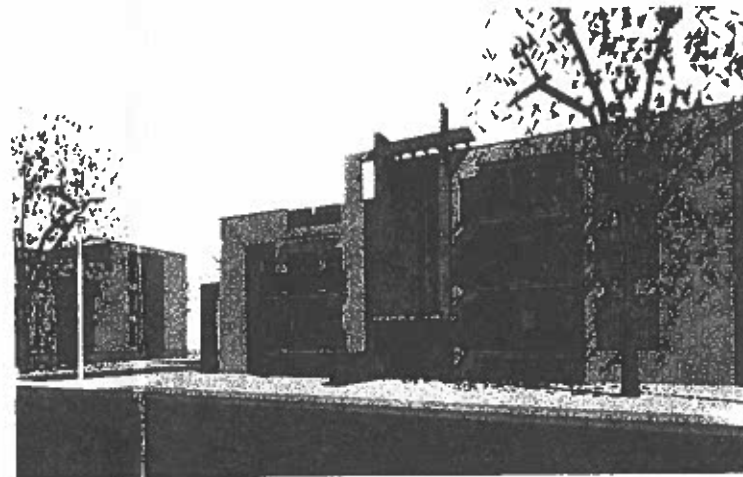
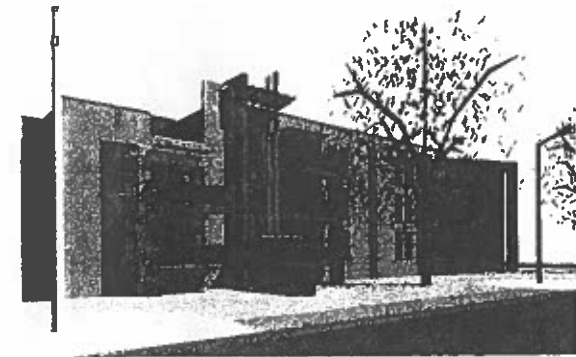
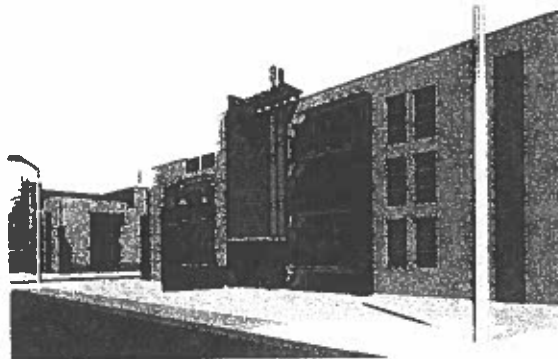
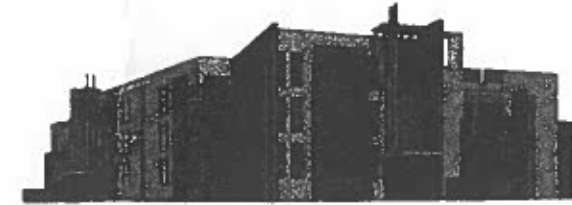
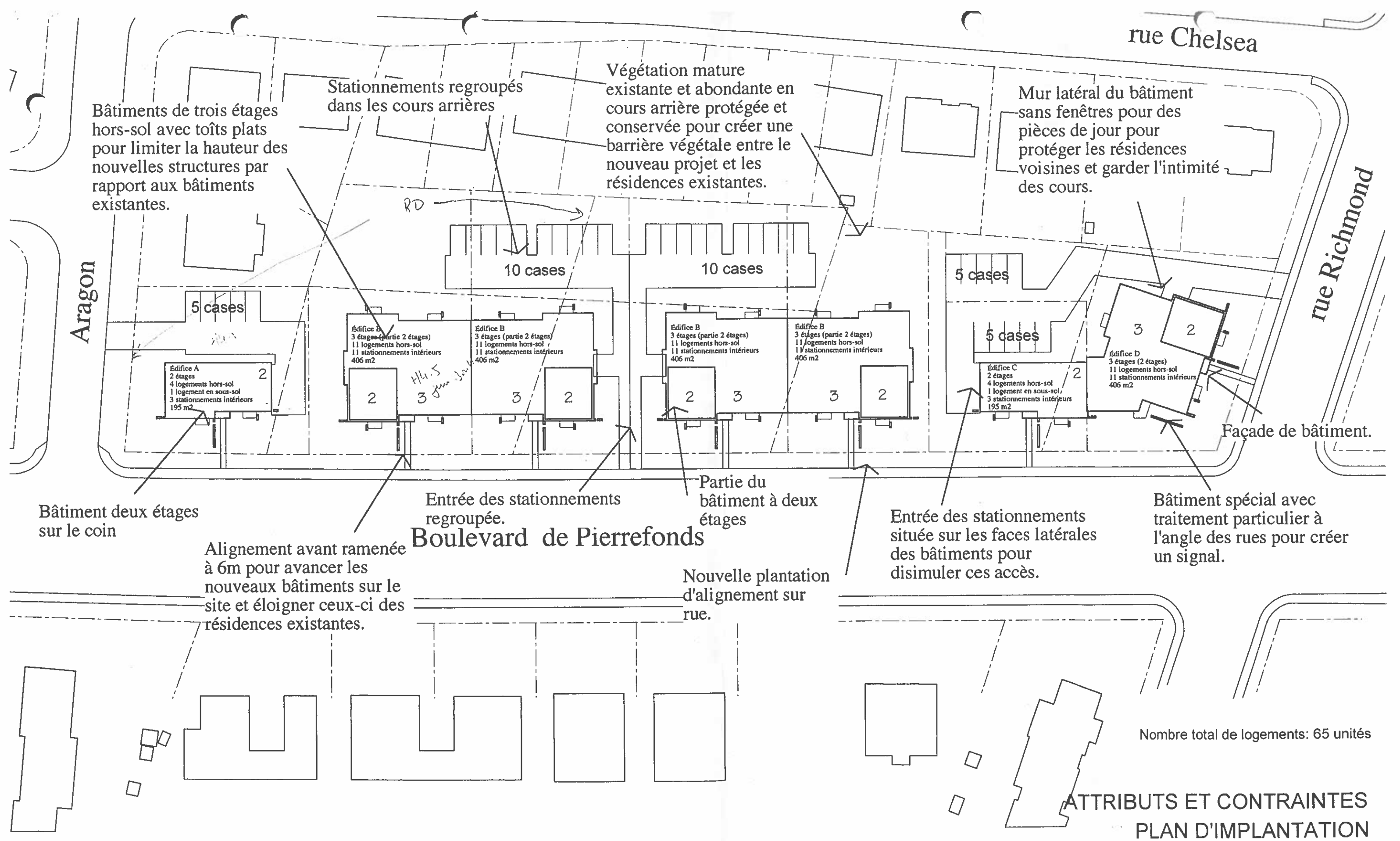


VILLE DE MONTRÉAL
Arrondissement Pierrefonds/Sennéville
Aménagement urbain et services
aux entreprises
Division urbanisme et aménagement



2002-11-26 14:00

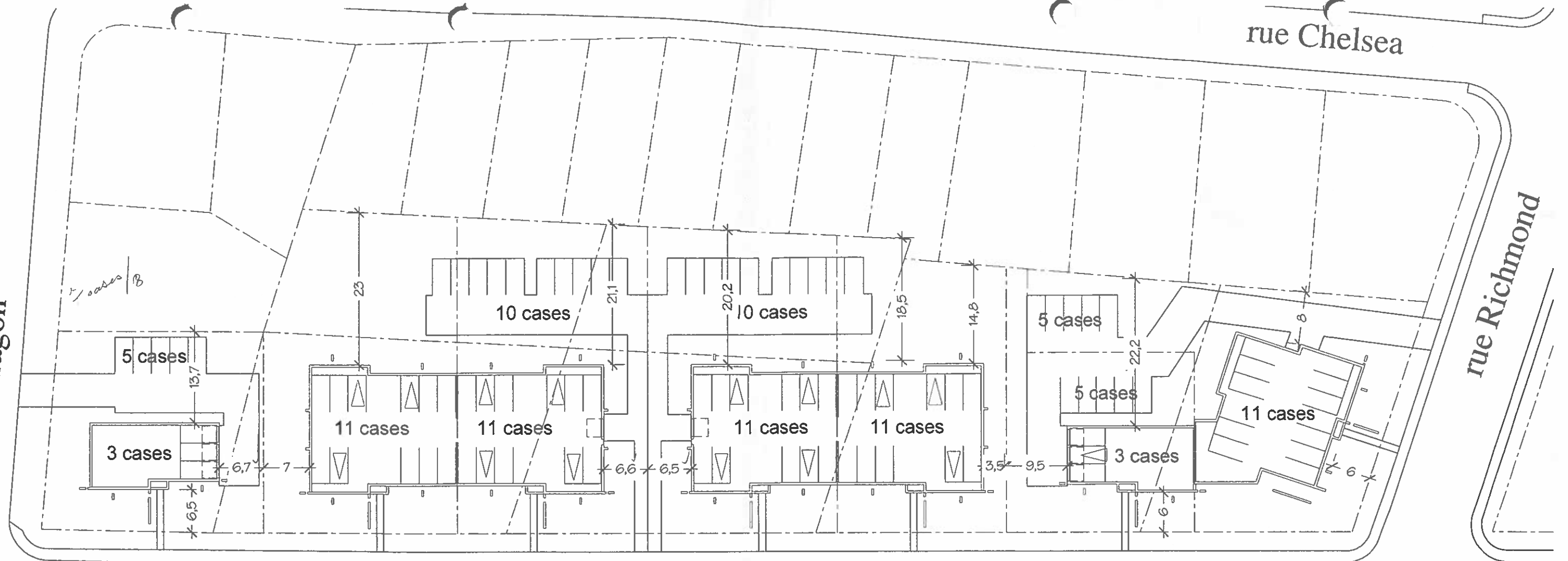
AXONOMÉTRIES ET PERSPECTIVES



Aragon

rue Chelsea

rue Richmond



973 m2

1360 m2

1347 m2

1304 m2

1079 m2

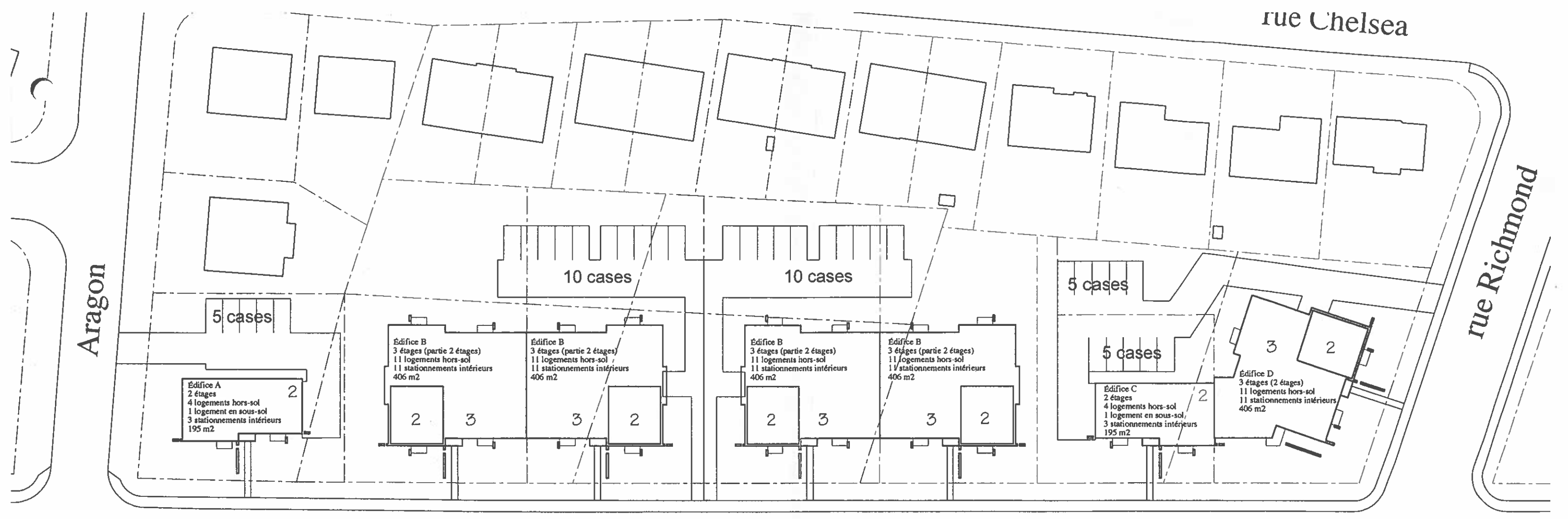
815 m2

1373 m2

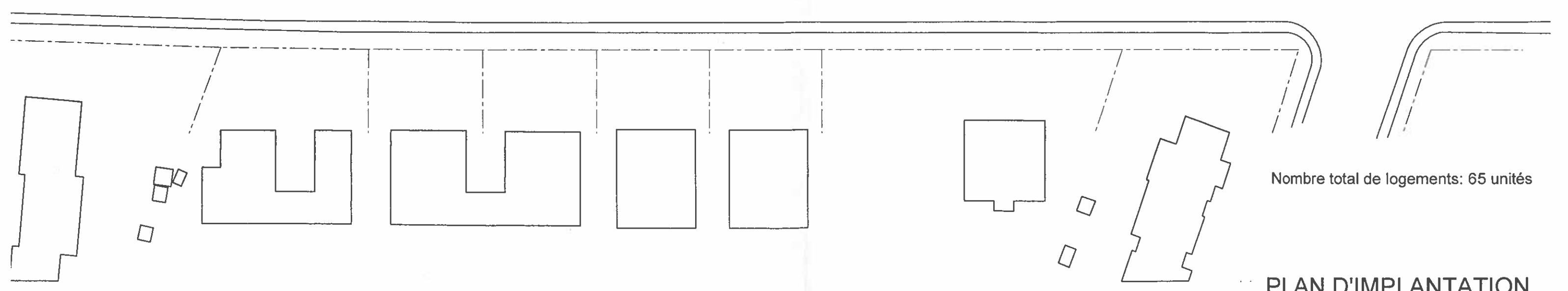
Boulevard de Pierrefonds

Type	# log	St. rqs.	St. disp.	Total
A:	5	8	8 x 1	8
B:	11	16	16 x 4	64
C:	5	8	8 x 1	8
D:	11	16	16 x 1	16
Total				96

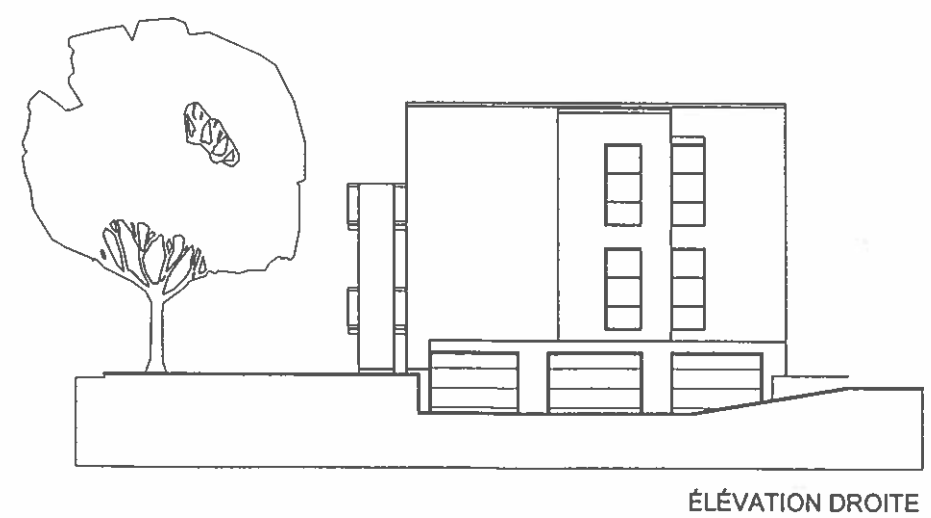
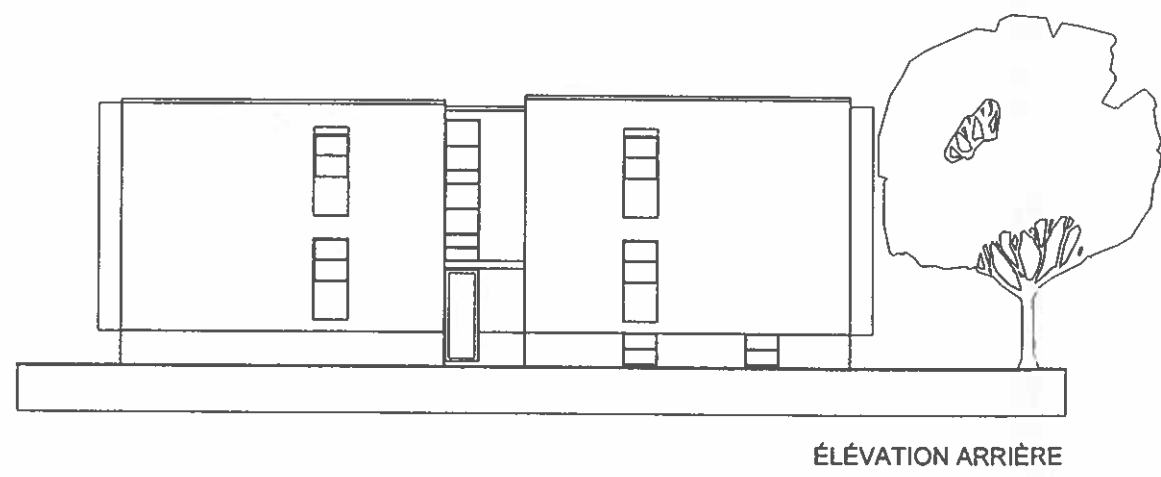
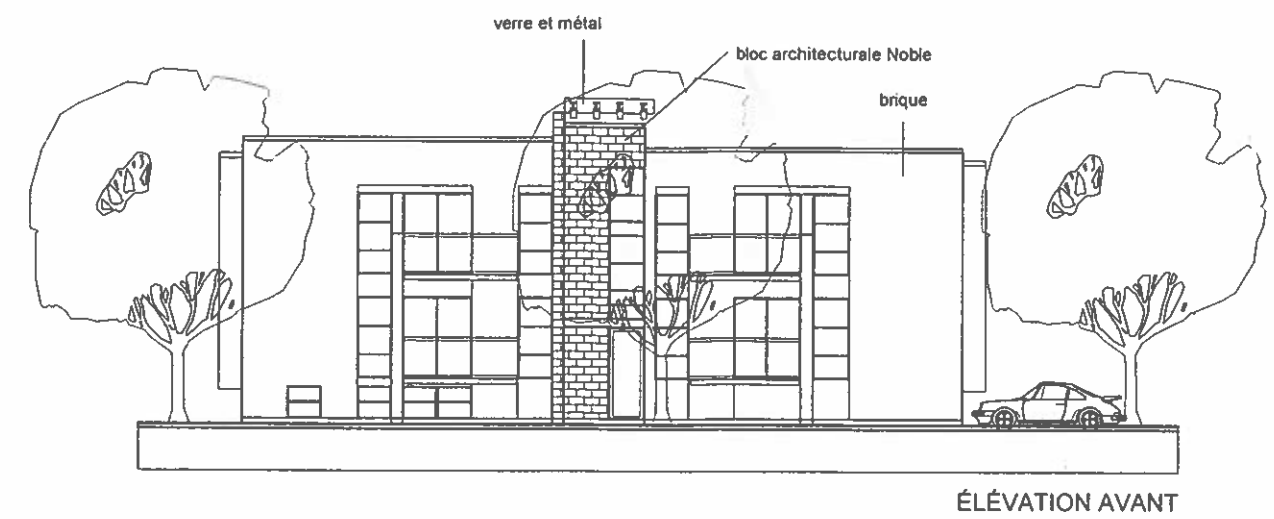
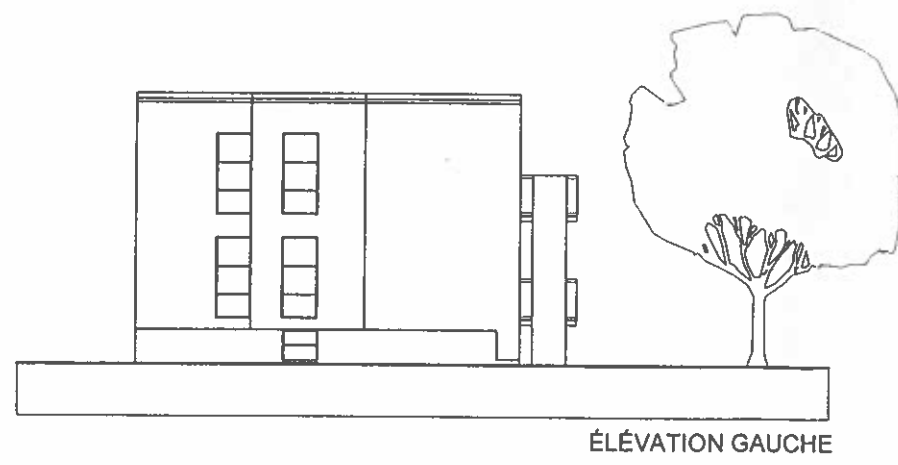
PLAN DES STATIONNEMENTS



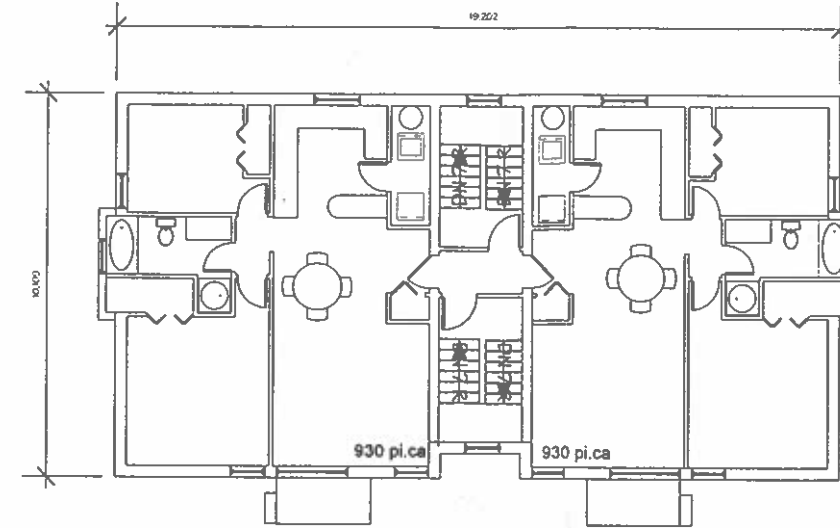
Boulevard de Pierrefonds



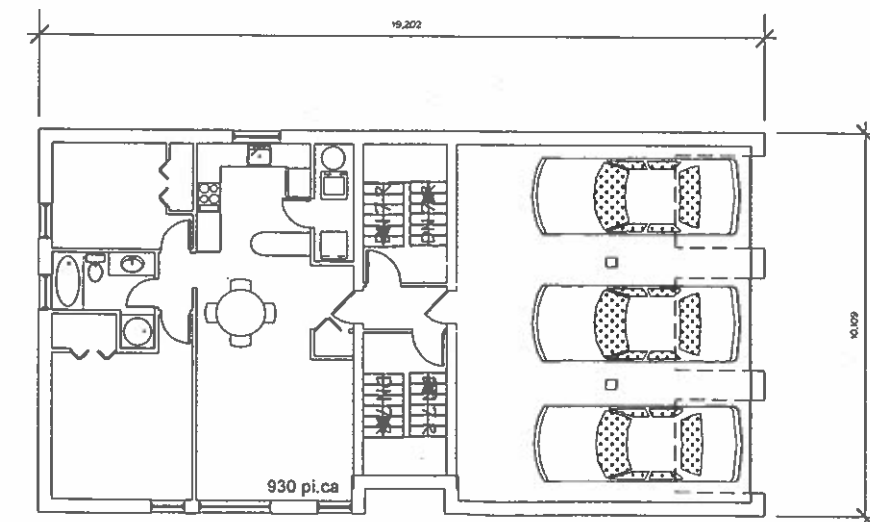
PLAN D'IMPLANTATION



ÉLÉVATIONS BÂTIMENT TYPE A

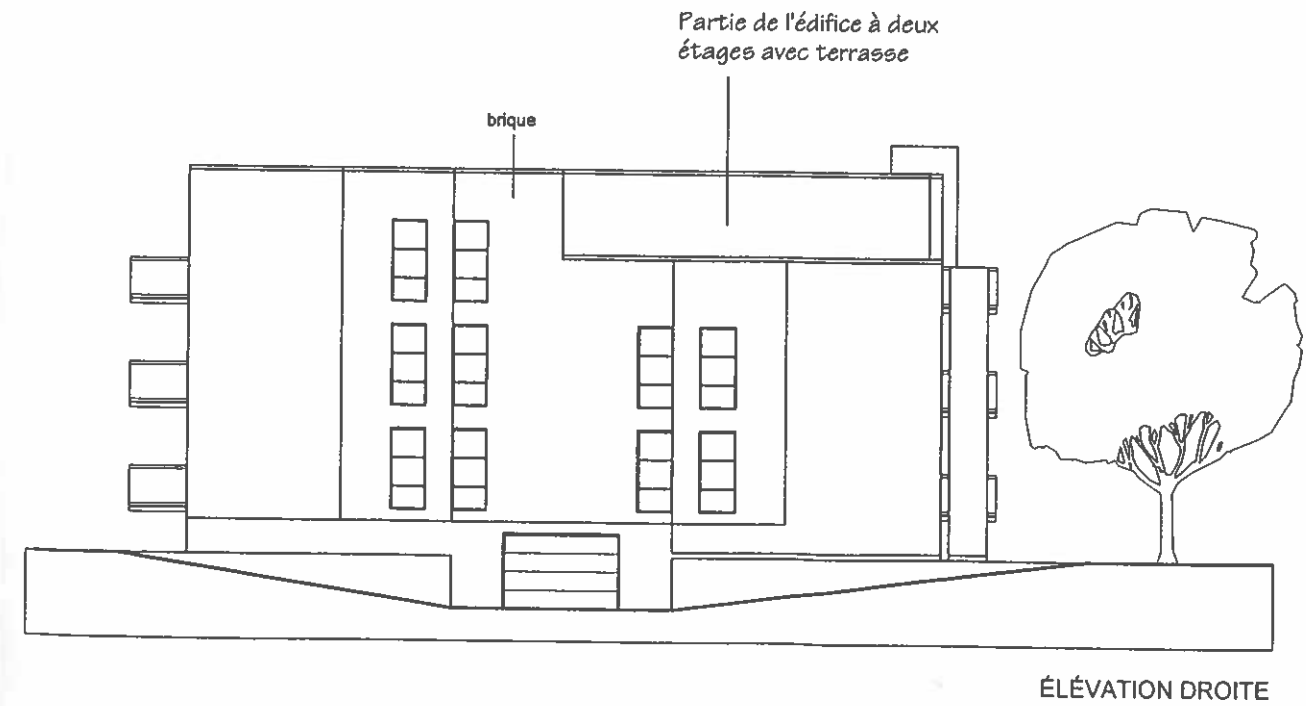
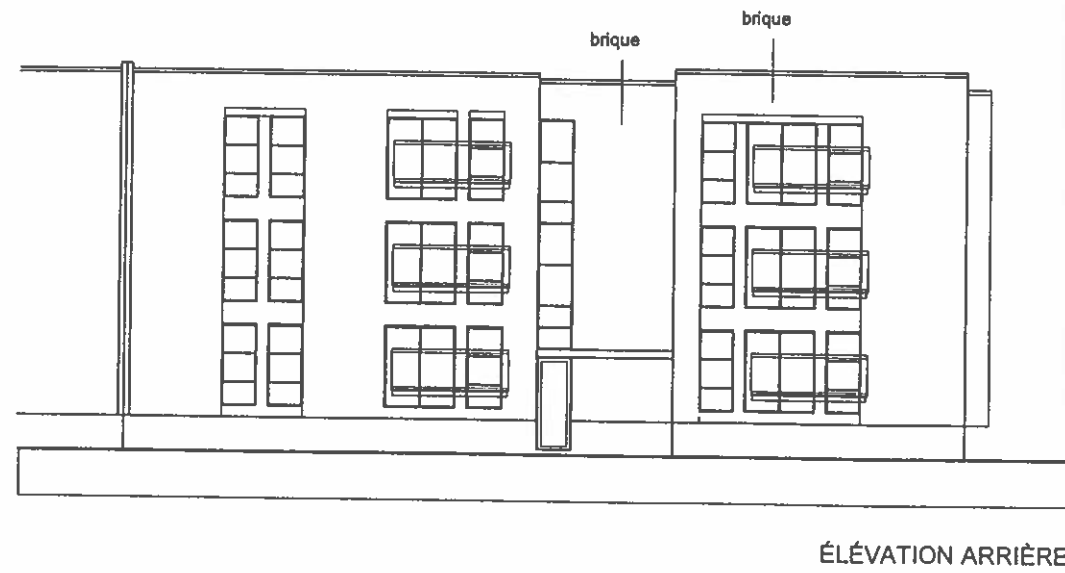
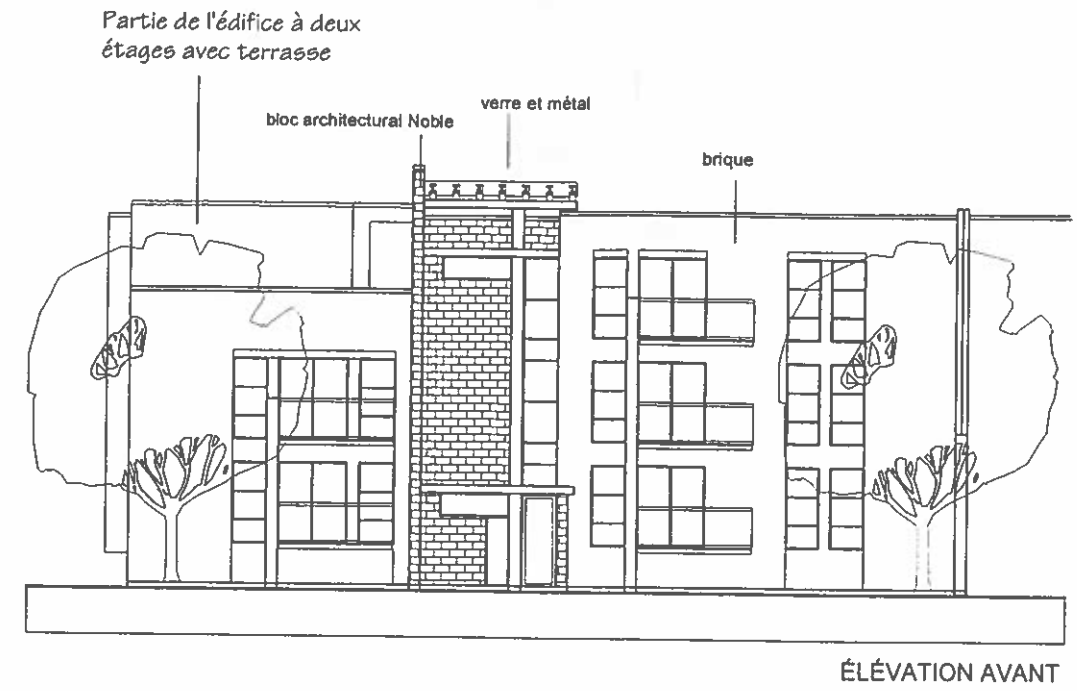
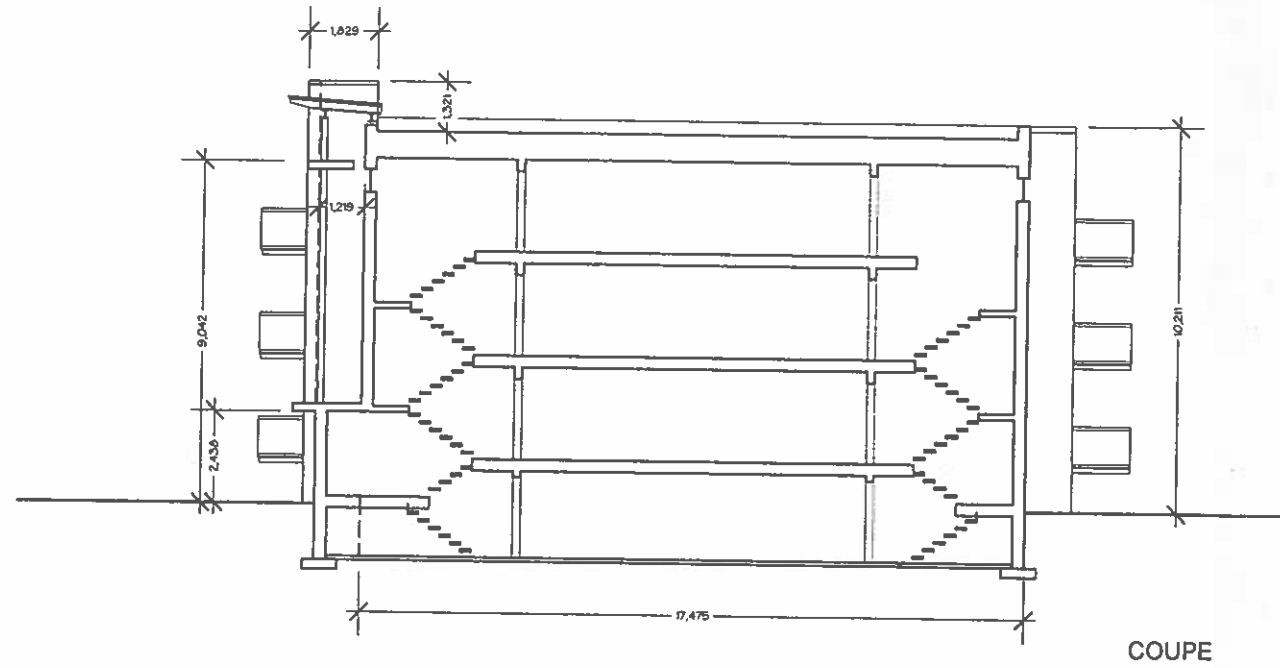


PLAN D'ÉTAGE TYPE

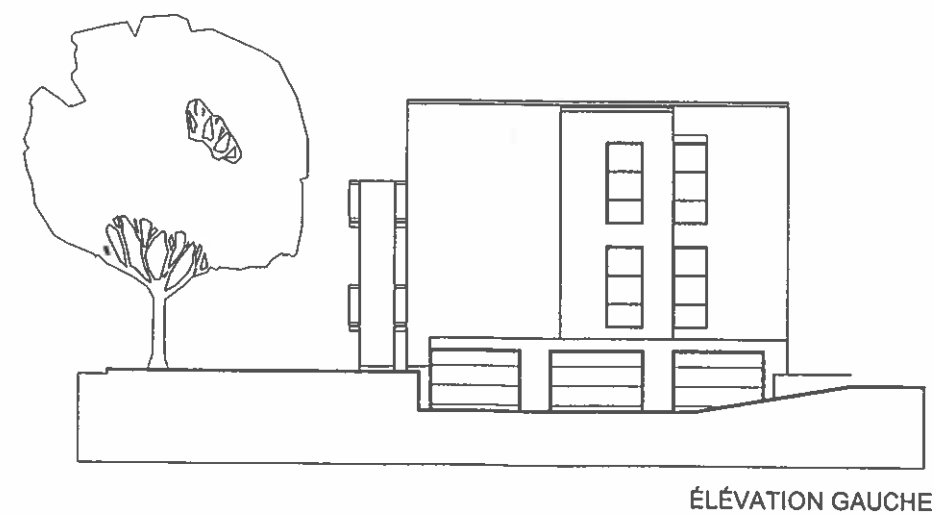
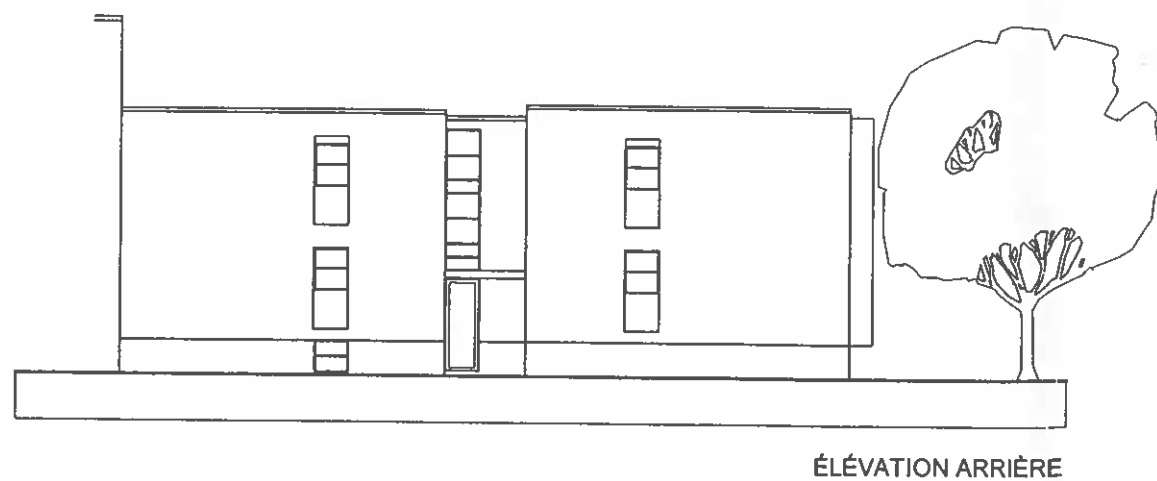
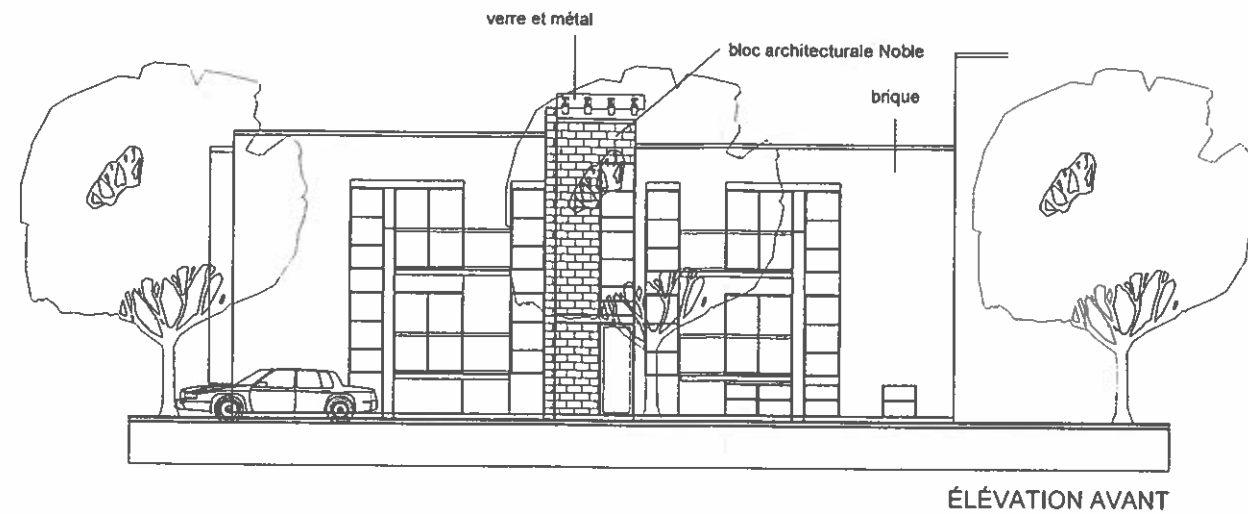


PLAN DU SOUS-SOL

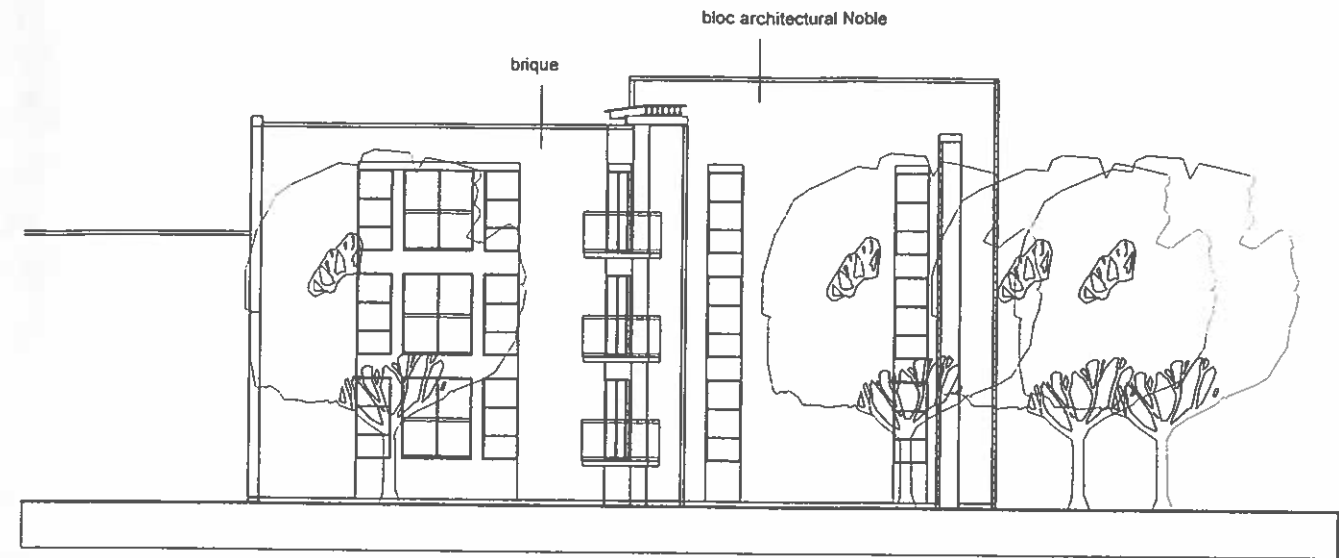
PLANS BÂTIMENT TYPE A



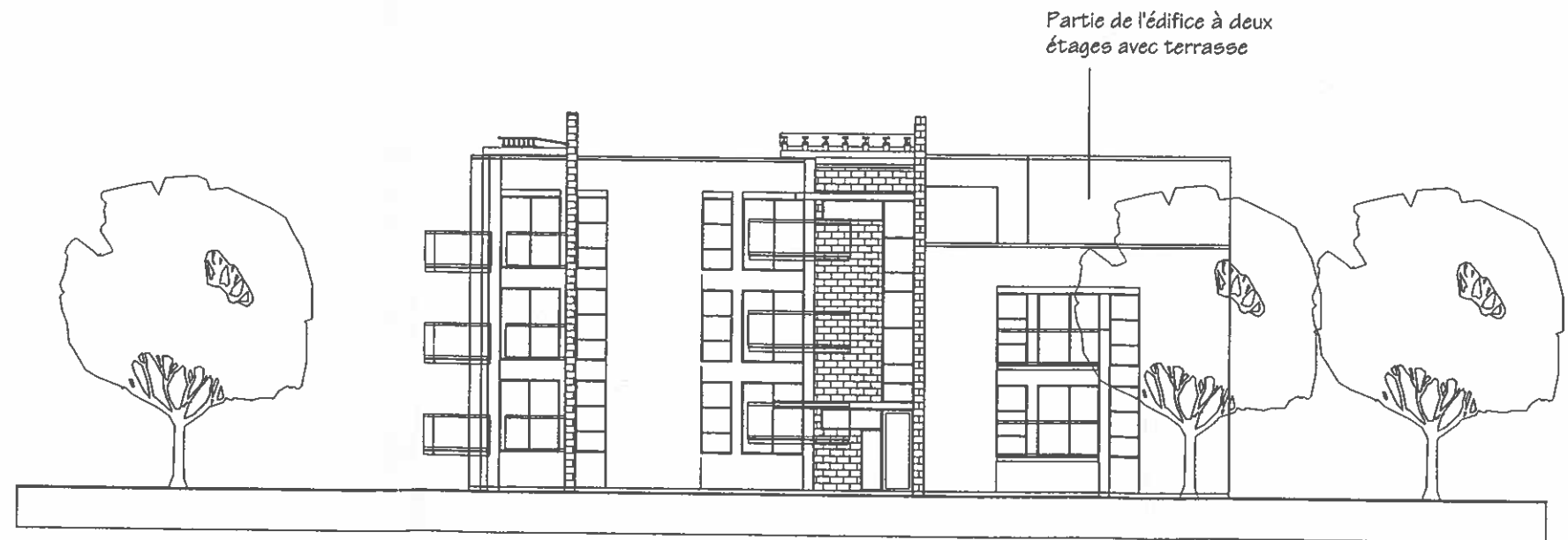
ÉLEVATIONS BÂTIMENT TYPE B



ÉLEVATIONS BÂTIMENT TYPE C

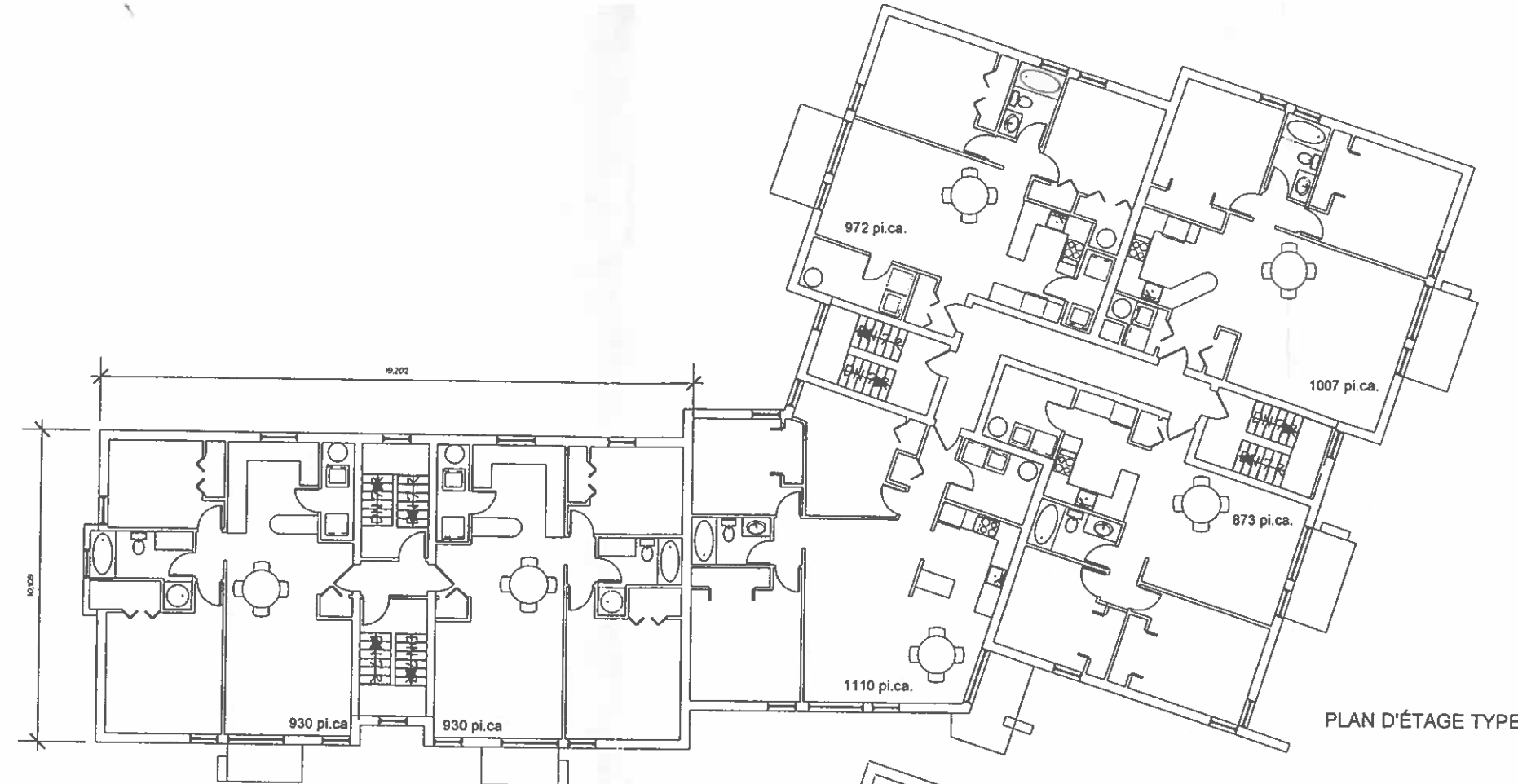


ÉLÉVATION BOUL. DE PIERREFONDS

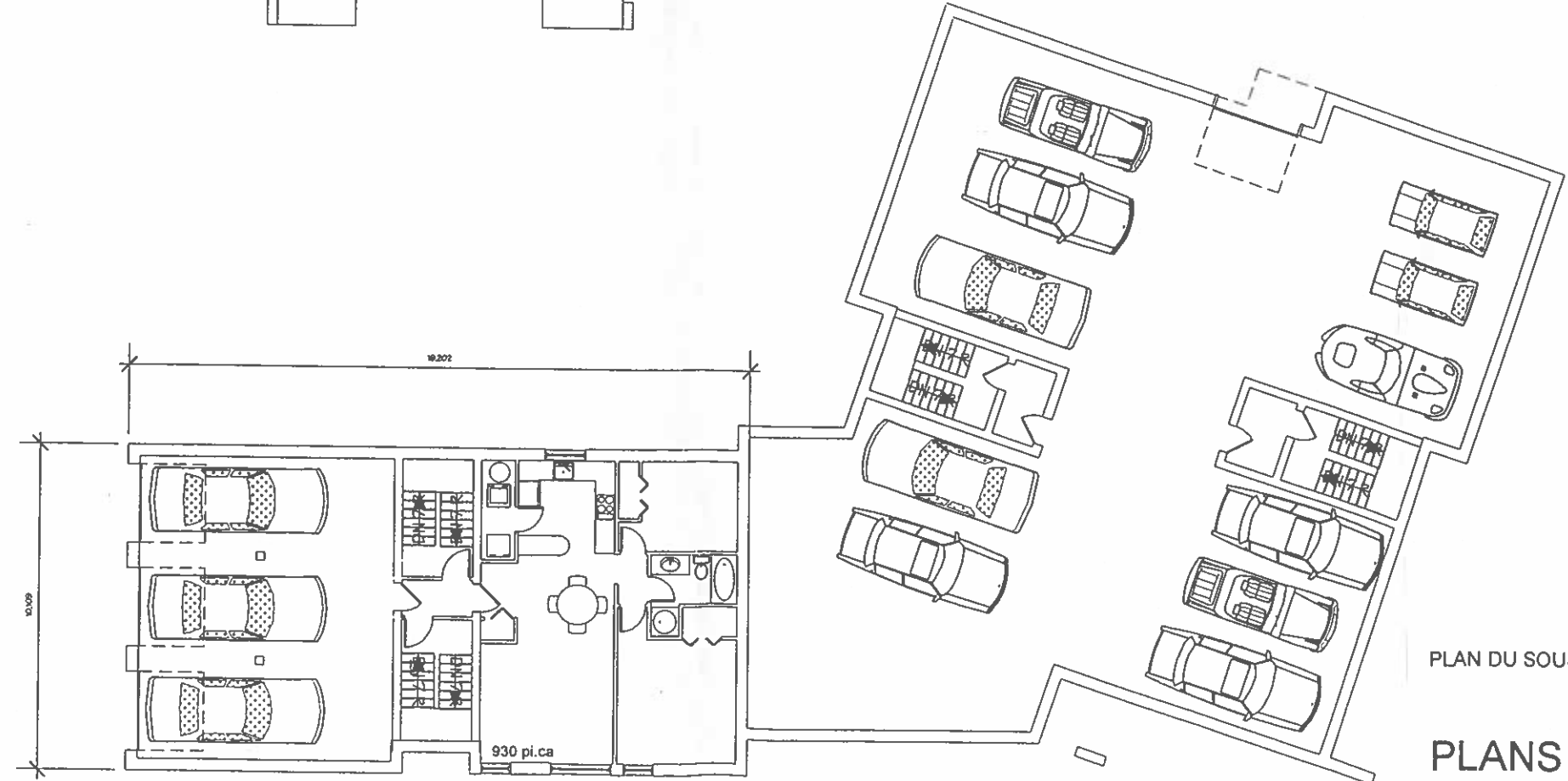


ÉLÉVATION RICHMOND

ÉLÉVATIONS BÂTIMENT TYPE D



PLAN D'ÉTAGE TYPE



PLAN DU SOUS-SOL

PLANS BÂTIMENT TYPE D