

Mainmise sur un parc public

John Burcombe

Mouvement Au Courant

Mars 2003









→ Pistes de patin et de vélo → Plage → Jardins

Des îles pour tous... du plaisir pour chacun!

Parc Jean-Drapeau

514 872-6120

www.parcjeandrapeau.com

The advertisement is a rectangular sign with a white border, mounted on a blue metal fence. It features a background image of a striped hammock on a sandy beach under a blue sky. In the top left corner, there is a small photo of two children wearing sunglasses. The text is arranged in several sections: a top navigation bar with three items, a central headline, a logo on the left, and contact information at the bottom.



A black rectangular sign with a yellow square logo on the left containing the word "orange" in lowercase. To the right of the logo, the word "orange" is written in a large, bold, yellow sans-serif font with a trademark symbol (TM) at the top right. The sign is mounted on a metal post and is positioned behind a chain-link fence.

orange™







HSBC 

HSB

HSBC  HSBC 

HSBC 



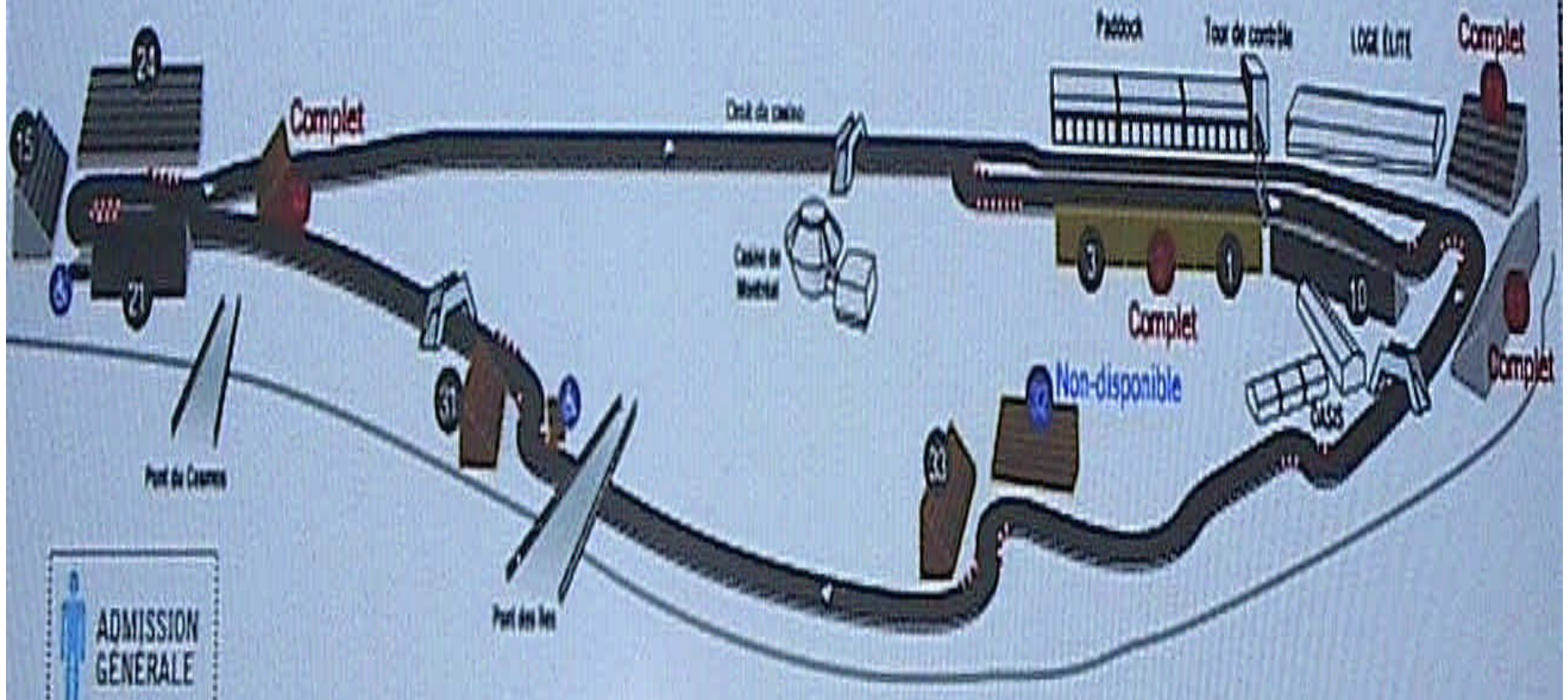


GRAND PRIX AIR CANADA

COMMANDEZ VOS BILLET

Sélectionnez votre tribune!

TRIBUNES OR  ARGENT  BRONZE 





Canon

SE







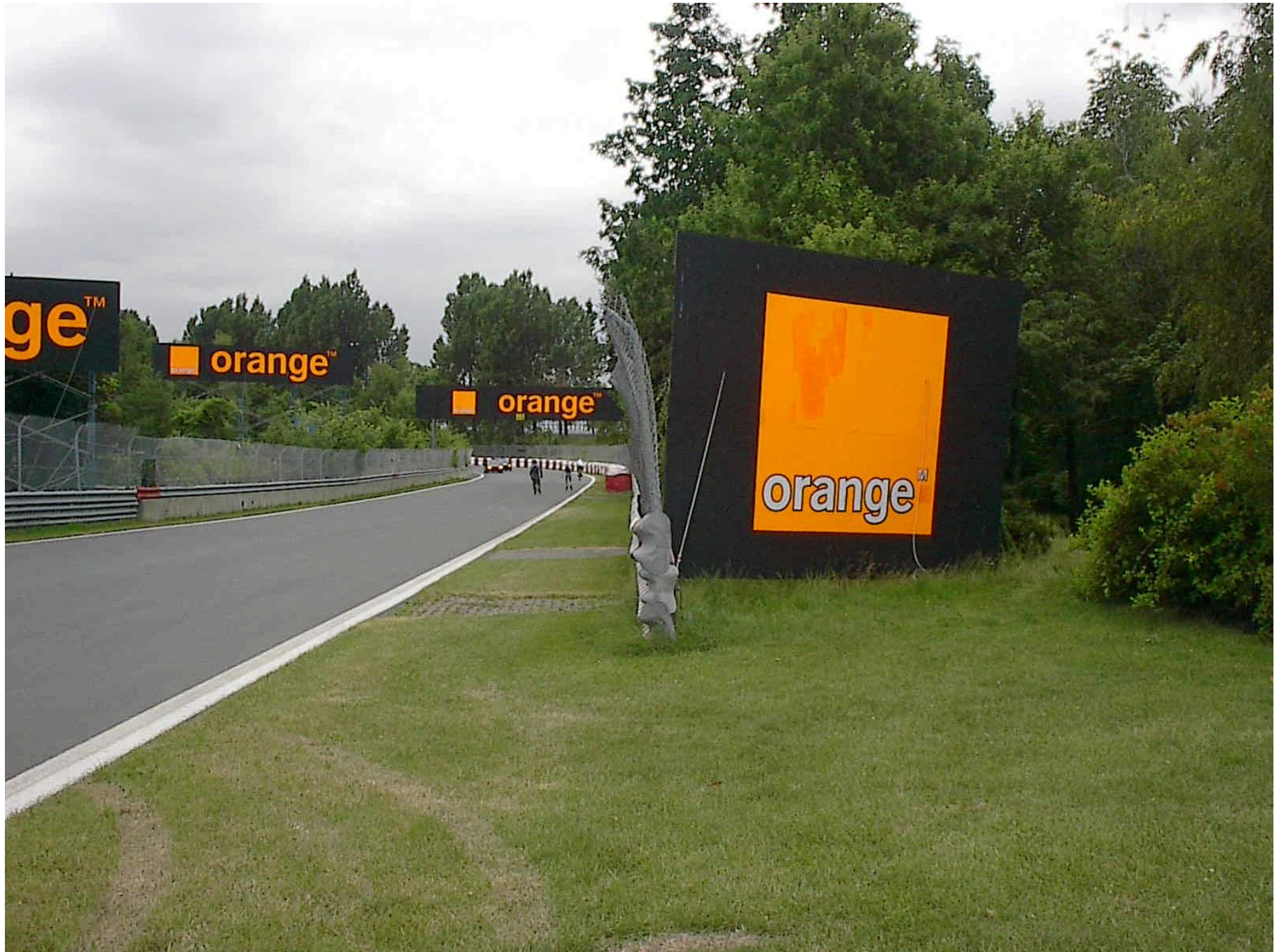
HELIX HELIX HELIX

ge™

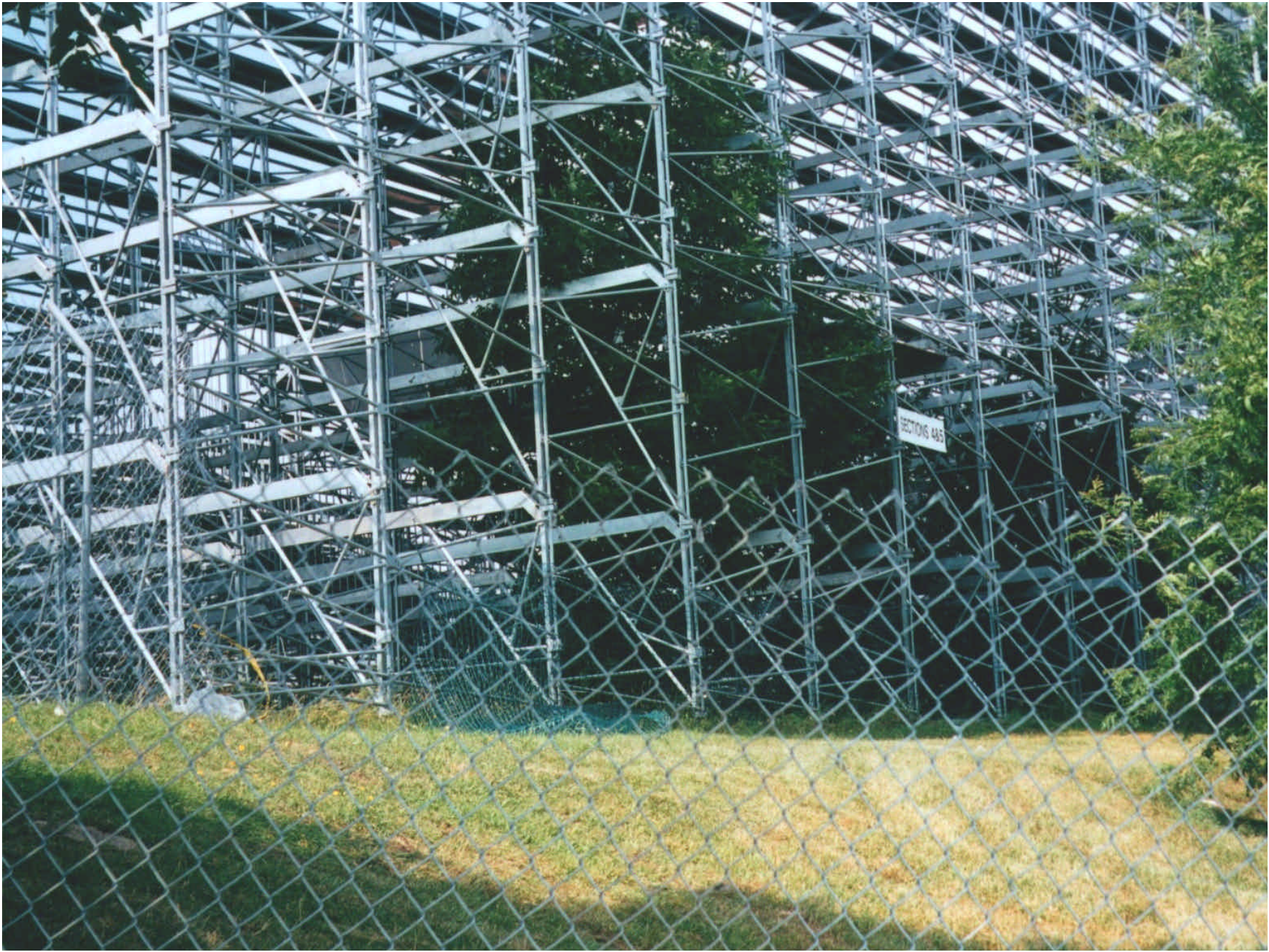
orange™

orange™

orange™







CASINO
CASINO de MONTREAL

CASINO

CASINO CASINO CASINO

CASINO

Direction
du parking
←



HSBC 

HSB

HSBC  HSBC  HSBC

HSBC 



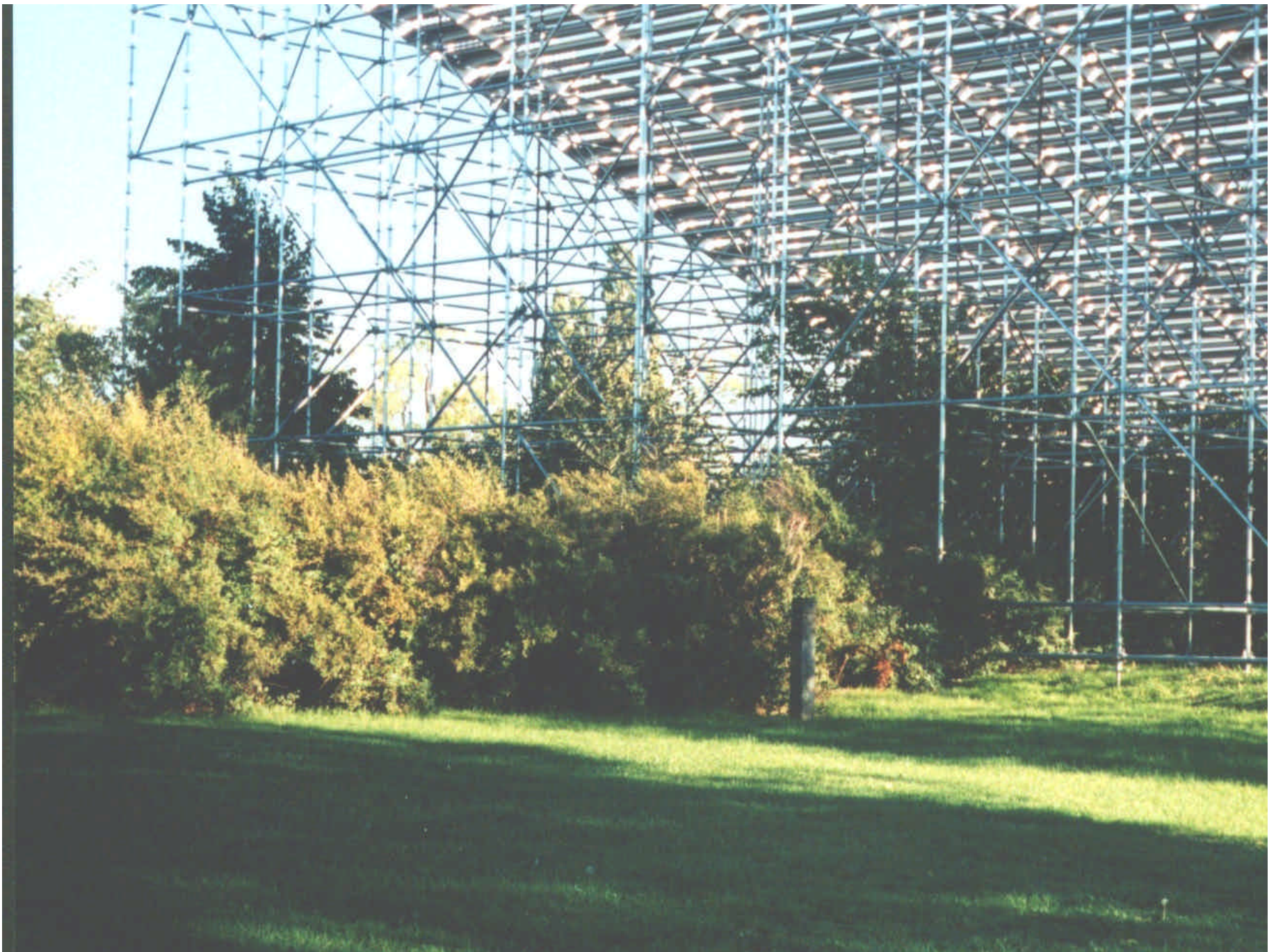
















Merci pour votre attention

John Burcombe
Mouvement Au Courant
4711, Av Palm
Montréal (Québec)
H4C 1Y1
tel. (514) 937-8283
téléc. (514) 937-7726
aucourant@sympatico.ca